



# 17th Fishponds Horticultural and Craft Show.

Saturday 10<sup>th</sup> August 2024

Official opening – 2pm

At:

The Beechwood Club, Beechwood Road

Fishponds BS16 3TP

**Classes include:**

**Flowers, Vegetables, Floral art, Photography, Baking**

**Art and Crafts - & special categories for children.**

*Light refreshments – Raffle – Competitions, Sale of produce.*

**Admission: £1 – under 16's free.**



*Why not come along and join us – with or without an exhibit; the show is open to everyone and we hope you'll find something of interest in the following schedule of classes. Entry forms can be found in the centre of the schedule....the more exhibits we have – the better the show! .....And the refreshments are pretty good too!!*

## RULES

- 1) Fruit, flower and vegetable exhibits (with the exception of the floral art classes) must have been grown by the exhibitor.
- 2) All trophies remain the property of 'Activate'. Winners undertake to return them 2 weeks prior to the next show.
- 3) The 'Activate' committee cannot accept responsibility for any loss or damage to exhibits or personal property during the show (including setting up and clearing away).
- 4) Vases for exhibits must be provided by the exhibitor.
- 5) No exhibitor may exhibit more than one entry in any one class. No two or more persons may exhibit produce from the same garden or greenhouse in any one class. A separate official entry form **must** be used for each exhibitor and entries **must** be as specified in the schedule.
- 6) Handicraft exhibits must **not** have been exhibited in previous years.
- 7) **All entry forms with appropriate fee of 50p per exhibit to be RECEIVED BY Wednesday 7<sup>th</sup> August 2024.**  
*(Entries accepted on day of show will be charged at 50p each and **must be submitted with a completed entry form between 09:15 and 10:15** – after which doors will be closed for judging)*
- 8) Exhibits must be staged at the Beechwood Club, Beechwood Road, Fishponds between 09:00 and 10:30 on the morning of the show.
- 9) No exhibit shall be removed before 3:50pm

## PROGRAMME

09:00 – 10:30	Staging of exhibits
11:00	Judging of exhibits
2:00pm	Official opening
3:30pm	Presentation of prizes, Trophies and Raffle
3:50pm	Removal of exhibits
4:00pm	Sale of produce*

\* To assist with the expenses of the show, it would be appreciated if some of the exhibits of flowers, vegetables, fruit, cookery and preserves could be offered for sale at the end of the afternoon.

Thank you.

For further supplies of schedules or entry forms, please phone

0117 9650156 – or visit our website:

[www.activatefishponds.co.uk](http://www.activatefishponds.co.uk)

## Trophies and Prize monies.

**Cup - awarded for highest overall number of points gained in the show.**

**Gill Coombe Salver – awarded for best entry in class 45 (Patchwork or quilting)**

**David Elsbury memorial trophy – awarded for highest number of points in the photography section.**

**Jean Mason Memorial Trophy – awarded for highest total number of points in classes 1-10**

*The above 4 awards are annual awards and remain the property of 'Activate' They are to be returned to Chris Williams (0117) 9650156 not later than 2 weeks prior to the next show.*

Prize money for each class in the show:

1<sup>st</sup> - £1

2<sup>nd</sup> – 75p

3<sup>rd</sup> – 50p



## SCHEDULE

Class

Title

### **FLOWERS AND PLANTS**

- 1 One single Rose
- 2 3 stems of Penstemon
- 3 Three stems of Dahlias of one variety (Cactus, Ball, Pom-pom or decorative)
- 4 One Gladiolus
- 5 3 stems of Alstroemeria
- 6 3 Pelargonium heads
- 7 A vase of 5 stems, each one a different garden flower
- 8 A vase of contrasting foliage
- 9 A foliage pot plant (not to exceed 9" / 23cm) width
- 10 A vase of 5 stems of Sweet Peas.
- 11 One Cactus
- 12 One Succulent



## VEGETABLES

- 13 Three Potatoes (any named variety)
- 14 Three Chillies – any one variety
- 15 Three Onions
- 16 Three Beetroot
- 17 Four Runner Beans
- 18 Three Carrots (any variety)
- 19 Three Tomatoes (not Cherry type)
- 20 Eight Tomatoes (Cherry or small variety)
- 21 Longest Runner Bean (judged on length only)
- 22 Any other vegetable not listed above
- 23 Any humorous looking vegetable!



## **FRUIT**



- 24 Three Dessert Apples
- 25 Plate (max 8" 20cm dia.) of soft fruit – one variety with stems
- 26 5 Plums – any variety
- 27 3 Cooking apples – any variety

## **HERBS**

- 28 Collection of 4 named herbs displayed in a vase or bunches

## **FLORAL ART**

- 29 'France' (Olympics are there this year!) – Table Arrangement using fresh plant materials and accessories of your choice. Max overall size 30cm x 30cm (12" x 12")
- 30 An arrangement in an unusual container. Max overall size 30cm x 30cm (12" x 12")





# **17<sup>th</sup> Fishponds Horticultural and Craft Show.**

Saturday 10<sup>th</sup> August 2024

**Entry Form overleaf**

17<sup>th</sup> Fishponds Horticultural Show

Entry Form.

First Name:.....Surname:.....

Address:.....

.....

Telephone:..... Age (if under 16).....

E-Mail Address:.....

Do you wish to be on the email list for future events: YES / NO

Please enter the class number (as listed in the schedule of classes)  
for each of your exhibits. **(50p per exhibit).**

.....

.....

.....

**Please indicate whether or not you are agreeable for your produce  
to be sold by deleting as appropriate:**

YES – SELL

NO – DO NOT SELL

Completed forms should be returned to: ‘Activate’ Vine Cottage,  
156 Manor Road, Fishponds. BS16 2EN – or put through letter box at  
main entrance of

The Beechwood Club, Beechwood Rd. Fishponds – to arrive by  
**Wednesday 7<sup>th</sup> August 2024** – clearly marked **‘FOR ACTIVATE’**

17<sup>th</sup> Fishponds Horticultural Show

Entry Form.

First Name:.....Surname:.....

Address:.....

.....

Telephone:..... Age (if under 16).....

E-Mail Address:.....

Do you wish to be on the email list for future events: YES / NO

Please enter the class number (as listed in the schedule of classes)  
for each of your exhibits. **(50p per exhibit).**

.....

.....

.....

**Please indicate whether or not you are agreeable for your produce  
to be sold by deleting as appropriate:**

YES – SELL

NO – DO NOT SELL

Completed forms should be returned to: ‘Activate’ Vine Cottage,  
156 Manor Road, Fishponds. BS16 2EN – or put through letter box at  
main entrance of

The Beechwood Club, Beechwood Rd. Fishponds – to arrive by  
**Wednesday 7<sup>th</sup> August 2024** – clearly marked **‘FOR ACTIVATE’**



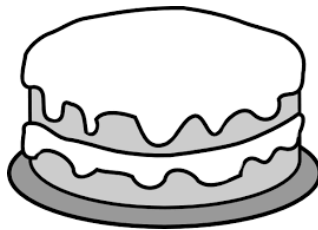
**17<sup>th</sup> Fishponds Horticultural  
and Craft Show.**

Saturday 10<sup>th</sup> August 2024

**Entry Form overleaf**

## HOME BAKING – please cover loosely

- 31 Cake using vegetable ingredient (please indicate vegetable used)
- 32 Plate of traditional savouries from any country.
- 33 Victoria Sponge (using recipe on page 18) Jam only filling – NO decoration of any kind – including sugar on the top.
- 34 Plate of 6 Scones (sweet or savoury)
- 35 6 decorated Cup-cakes or Muffins
- 36 Fruit cake (using recipe on page 18)
- 37 Dessert – ready to serve – including dish
- 38 Chocolate or coffee cake to your own recipe
- 39 Shortbread – plain or Millionaires



## PRESERVES – ANY SIZE JAR MADE TO OWN RECIPE

- 40 A Jar of Jam
- 41 A Jar of lemon Curd
- 42 A Jar of Marmalade
- 43 A Jar of Chutney or Pickle



## ART

- 44 A Painting by the exhibitor, in any medium. Max 30cm x 30cm (12" x 12")

## HANDICRAFTS AND HOBBIES

- 45 An example of Patchwork or Quilting
- 46 'Upcycling' - Something new from recycled materials
- 47 Crochet – any item
- 48 Knitting – any item
- 49 Cross stitch – any item
- 50 Any other craft / hobby item not listed above



## CHILDREN'S CLASSES

### Pre-school – Year 2

51                    A drawing or painting – A4 size

### Year 3 – 6

52                    A drawing or painting – A4 size

### Year 7 + (up to 16)

53                    A drawing or painting – A4 size

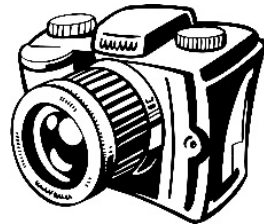


## **PHOTOGRAPHY – CHILDREN (Picture size 5" x 7")**

- 54 A Celebration
- 55 An animal (wild or pet)

## **PHOTOGRAPHY – ADULTS ( Picture size 5" x 7")**

- 56 Action (photo that captures fast action / motion)
- 57 Wildlife (any animal, insect, mollusc etc. but **excluding** domestic pets)
- 58 Flowers / Foliage
- 59 Water



### **NOTES APPLICABLE TO ALL ENTRIES IN PHOTOGRAPHIC CLASSES.**

**All photos must be unmounted.**

**No editing or enhancement of photos is allowed**

**ALL photos MUST be 5" x 7" (125 x 175mm)**

**One entry per person per class**

**Please ensure your name is on the back of all photos.**

## RECIPES:

### **SPONGE CAKE (CLASS 31)**

6oz / 170g Self raising flour  
6oz / 170g Butter or margarine  
6oz / 170g Caster sugar  
3 Eggs  
Raspberry jam for filling

Beat the butter and sugar together until pale and fluffy.  
Add the eggs and mix well. Fold in the flour.  
Divide the mixture between 2x 7" (17.5cm) tins.  
Bake at 180C / Gas mk4 for around 30 - 40 mins or when the sponge springs back when lightly touched. When cool, add jam between the sponges.

**DO NOT DECORATE.** Display on paper or foil plate.

### **FRUIT CAKE (CLASS 34)**

8oz / 227g Self raising flour  
4oz / 113g Caster sugar  
4oz / 113g Margarine  
8oz / 227g dried mixed fruit  
2 eggs  
½ level tsp salt  
1 tsp mixed spice

Add all ingredients together and mix well. Add a drop of milk if necessary. Turn into a 7" (17.5cm) tin.  
Bake at 170C / Gas mk3 for around 1 – 1.5 hrs.  
Display on paper or foil plate.

## HINTS FOR EXHIBITING VEGETABLES:

- Potatoes      Uniform size and shape – medium size.
- Onions        Do not rub off outer skins – just clean. Cut roots to about ½ “ / 1.25cm. Tops can be tied down.
- Runner beans Best not showing beans inside. Uniform size and shape is best.
- Carrots        Avoid green tops
- Tomatoes     Leave stalks on. Do not polish. Best without split skins

‘Activate’ would like to thank local businesses for their help in  
promoting the Horticultural show  
By displaying posters and having  
Show schedules available for the public.

We are also grateful to the judges  
For their interest in the show  
And for the time and effort they take  
To give a fair assessment of the exhibits –  
And to our wonderful refreshment team  
For baking, buying, brewing and smiling!

And of course, THANK **YOU** for attending  
and / or exhibiting.  
See you again next year!

For a large print version of the schedule and more information about 'Activate' events, other local community groups, gardening tips and more – visit our website:  
[www.activatefishponds.co.uk](http://www.activatefishponds.co.uk)

**THANK  
YOU!**

Space below for your Notes:

Any personal information is used for historical monitoring purposes only via electronic means, or to advise you of future events where you have indicated this is permissible - or in the event of needing to retrieve a cup / trophy. Paper records are destroyed confidentially.